

MOTORIZED DIGITAL ROCKWELL/SUPERFICIAL ROCKWELL HARDNESS TESTERS (DOLPHIN-NOSE TYPE)

FORCE LOADING BY ELECTRIC MOTOR (WITHOUT WEIGHTS)

TOUCH
SCREEN


**INSPECTION
CERTIFICATE**

workpiece demonstration



can test rings, tubes, internal surfaces of frame parts, etc.



HDT-DM310

- Full closed-loop precise control, real-time monitoring of test force, greatly increase the accuracy
- Dolphin-nose structure indenter, more measuring space
- Measurements on 30 Rockwell and Superficial Rockwell scales
- Convertible to various hardness standards such as HB, HV, HLD, HK and tensile strength
- 250 sets of data are stored independently in the mainframe, which can be accessed at any time
- Mean, variance, maximum and minimum statistics are available
- USB communication port, can be connected to an external computer, measurement data Excel output
- Correction function automatically corrects the measurement results of curved parts
- Conforms to ASTM E-18, ISO 6508



Ø150mm flat anvil (included)



integrated printer (optional)



V-type anvil (included)



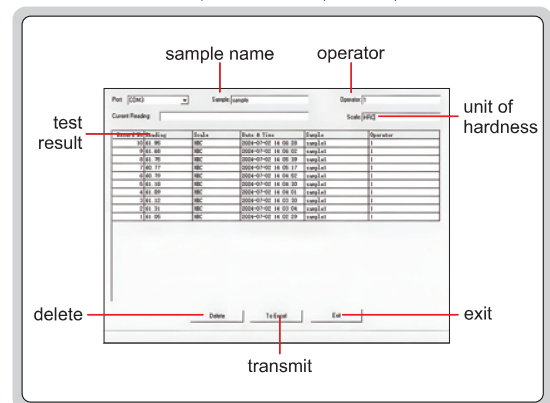
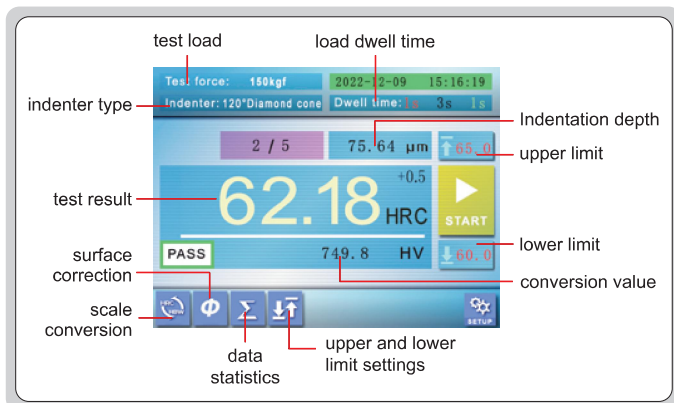
14mm high Rockwell
Indenter (included)



4mm high Rockwell
Indenter (optional)

test interface

computer software (included)



SPECIFICATION

| Code | | HDT-DM290 | HDT-DM300 | HDT-DM310 |
|-----------------------------|------------------------|--|---|--|
| Type | | Rockwell | Superficial Rockwell | Rockwell and Superficial Rockwell |
| Hardness scale | with indenter included | HRA, HRB, HRC, HRD, HRF, HRG | HR15N, HR30N, HR45N, HR15T, HR30T, HR45T | HRA, HRB, HRC, HRD, HRF, HRG, HR15N, HR30N, HR45N, HR15T, HR30T, HR45T |
| | with optional indenter | HRE, HRH, HRK, HRL, HRM, HRP, HRR, HRS, HRV | HR15W, HR30W, HR45W, HR15X, HR30X, HR45X, HR15Y, HR30Y, HR45Y | HRE, HRH, HRK, HRL, HRM, HRP, HRR, HRS, HRV, HR15W, HR30W, HR45W, HR15X, HR30X, HR45X, HR15Y, HR30Y, HR45Y |
| Preliminary test force | | 98N/10kgf for Rockwell | 29.4N/3kgf for superficial Rockwell | 98N/10kgf for Rockwell 29.4N/3kgf for superficial Rockwell |
| Test force | | 588N (60kg), 980N (100kg), 1471N (150kg) | 147N (15kg), 294N (30kg), 441N (45kg) | 147N (15kg), 294N (30kg), 441N (45kg), 588N (60kg), 980N (100kg), 1471N (150kg) |
| Stage elevation | | manual | | |
| Load control | | automatic (load/dwell/unload) | | |
| Load dwell time | | 2~250 seconds, can be set | | |
| Resolution | | 0.01HR | | |
| Max. workpiece height | | 290mm | | |
| Max. testing width | | 220mm | | |
| Max. bore depth | | 130mm | | |
| Min. testing inner diameter | | 35mm | | |
| Power supply | | 220V, 50/60Hz | | |
| Dimension | | 700×290×880mm | | |
| Weight | | 85kg | | |

STANDARD DELIVERY

| Code | HDT-DM290 | HDT-DM300 | HDT-DM310 |
|---|-----------|-----------|-----------|
| Main unit | 1 pc | 1 pc | 1 pc |
| 14mm high diamond Rockwell indenter (HDT-DM-14MM) | 1 pc | 1 pc | 1 pc |
| Ø1.5875 carbide ball indenter (HDT-DM-BALL) | 1 pc | 1 pc | 1 pc |
| Ø150mm flat anvil | 1 pc | 1 pc | 1 pc |
| V-type anvil | 1 pc | 1 pc | 1 pc |
| Hardness test block HRC20~30 | 1 pc | — | 1 pc |
| Hardness test block HRC35~55 | 1 pc | — | 1 pc |
| Hardness test block HRC60~70 | 1 pc | — | 1 pc |
| Hardness test block HRB85~100 | 1 pc | — | 1 pc |
| Hardness test block HRA80~88 | 1 pc | — | 1 pc |
| Hardness test block HR15N89~91 | — | 1 pc | 1 pc |
| Hardness test block HR15T88~93 | — | 1 pc | 1 pc |
| Hardness test block HR30N74~80 | — | 1 pc | 1 pc |
| Hardness test block HR30T70~82 | — | 1 pc | 1 pc |
| Computer software and USB cable | 1 pc | 1 pc | 1 pc |
| Anti-dust cover | 1 pc | 1 pc | 1 pc |

OPTIONAL ACCESSORY

| | |
|--------------------------------|--------------|
| Hardness test block HRC20~30 | HDT-B-HRC1 |
| Hardness test block HRC35~55 | HDT-B-HRC2 |
| Hardness test block HRC60~70 | HDT-B-HRC3 |
| Hardness test block HRB88~100 | HDT-B-HRB |
| Hardness test block HRA80~84 | HDT-B-HRA |
| Hardness test block HR15N78~88 | HDT-B-HR15N2 |
| Hardness test block HR15T88~93 | HDT-B-HR15T |

| | |
|---|--------------|
| Hardness test block HR30N55~73 | HDT-B-HR30N2 |
| Hardness test block HR30T73~82 | HDT-B-HR30T |
| 4mm high diamond Rockwell indenter* | HDT-DM-4MM |
| Ø90mm flat anvil | HDT-DM290-FA |
| Ø230mm flat anvil | HDT-DM290-FB |
| Integrated printer (require pre-installation) | HDT-DM290-PT |

*The minimum testing inner diameter is 25mm